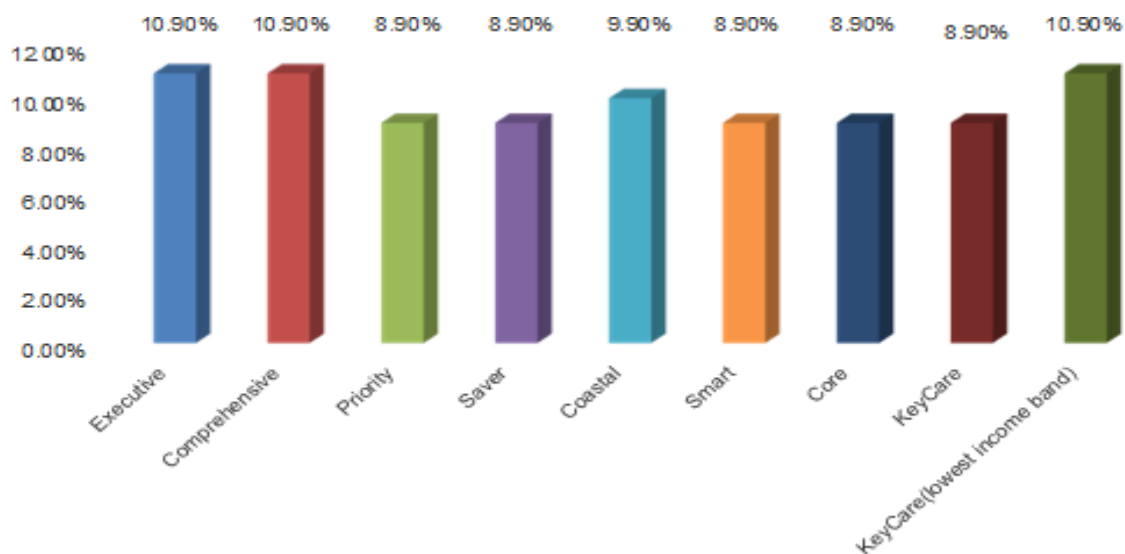


DISCOVERY MEDICAL SCHEME 2020 LAUNCH HIGHLIGHTS

- Weighted average contribution increase: 9.5%
- Introduction of Classic Smart Comprehensive Option
- Smart Hospital Network expanded
- Changes to Specialised Medicine & Technology Benefit
- Enhancements to Primary Care
- Primary Care for household employees
- Discovery Coaches
- Vitality Active Rewards for kids & teens
- Enhancement to rewards partners
- Discovery Integrator
- Vitality introduces mental wellbeing

Discovery Health Medical Scheme 2020

Discovery Health Medical Scheme (Discovery Health) benefits and contributions for 2020 were communicated to brokers at a national launch on 11 September 2019. In a very difficult operating environment, Discovery Health was able to limit their weighted average increase to 9.5%. The scheme also introduced a number of innovative product changes and remains one of the leaders in the industry, with current membership of just over 2.8m lives and reserves of R17.6bn.



Benefit changes: Discovery Health

Delta Hospital Network expanded	<ul style="list-style-type: none"> ⦿ Life Wilgers Hospital in Pretoria added to the network.
Smart Option : Hospital Network expanded	<ul style="list-style-type: none"> ⦿ More hospitals added in the following regions: Tzaneen, Klerksdorp, Welkom, Umtata, Newcastle, Ballito, Pretoria, Cape Town.
Introduction of Classic Smart Comprehensive Option	<ul style="list-style-type: none"> ⦿ The Classic Comprehensive Zero MSA option has been redesigned and renamed as Classic Smart Comprehensive Option. ⦿ Benefits include: <ul style="list-style-type: none"> - Extensive day-to-day benefits from the Smart Series - Unlimited Above Threshold Benefit from the Comprehensive Series (GP & specialist consultations, prescribed medicine, allied healthcare services, radiology, pathology, basic dentistry, *dental appliances, *optometry) *limits apply. - Comprehensive maternity benefits - Comprehensive in-hospital benefits for admission in a Smart Network Hospital - Admissions outside the network are subject to a co-payment of R9,650 - Chronic illness benefit: chronic drug amount will be applicable if medicine is not on the list - Oncology benefits, PMB conditions covered in full, non-PMB conditions will be covered up to R300,000 over a 12 month cycle, thereafter a 20% co-payment will apply - Screening & prevention benefit will include an annual health check, screening for specific chronic conditions and cancers, age-specific chronic conditions and cancers, age specific screening for children <18 and an annual flu vaccination
Classic Smart Comprehensive Option day-to-day benefit summary	<ul style="list-style-type: none"> ⦿ Unlimited visits to Smart GP's with a co-payment of R55. ⦿ Acute medicine: prescribed by Smart GP from a defined list of medicine (schedule 3 and above), dispensed by a network Pharmacy (including Clicks or Dischem). Cover is subject to annual limit of R2,500 per person or R4,000 for a family. ⦿ Over the counter medication (schedule 0 – 2) obtained from a network pharmacy, up to an annual limit of R800 per family per year. ⦿ Sports injury benefit: defined cover for specialist consultations, basic x-rays and treatment by allied health professionals. ⦿ Dental care and eye care: one dental check-up per year and one eye-test per year at Discovery network providers, with a co-payment of R55 for eye care and a R110 co-payment for a dental check-up. ⦿ MRI/CT scans: out-of-hospital benefit, subject to first R3,040 payable by the member and the balance payable by the scheme up to 100% of Discovery Health Rate. ⦿ Smart specialist consultation: covers consultations for a specific list of network gynaecologists, paediatricians, physicians and ENT's, including the cost of radiology or pathology prescribed by the specialist, covered at 100% of Discovery Health Rate, up to R5,000 per person per year / R10,000 per family per year, subject to referral by a Smart GP.
Change to Acute Medicine Benefit on the Classic Smart Plan	<ul style="list-style-type: none"> ⦿ Acute medicine on the Classic Smart Plan will be subject to an annual benefit limit of R1,500 per member and R2,500 for a family for schedule 3 and higher acute medication prescribed by a Smart GP. ⦿ The R10 co-payment will no longer apply. ⦿ Members may use both Clicks and Dischem to obtain the medicine.
Changes to Specialised Medicine & Technology Benefit	<ul style="list-style-type: none"> ⦿ Discovery will introduce full cover options for treatment of rheumatoid arthritis, ulcerative colitis and Crohn's disease funded from Specialised Medicine and Technology Benefit. Should members voluntarily use alternative treatment, the scheme will only pay up to reference price for treatment.

	<ul style="list-style-type: none"> ⦿ It will not impact the funding of treatment authorised prior to January 2020.
Changes to Chronic Illness Benefit	<ul style="list-style-type: none"> ⦿ From 1 January 2020 certain formulary changes and chronic drug amount updates will apply, communication had been sent to impacted members who will have until the end of 2019 to make changes to avoid/reduce co-payments.
Changes to Day-to-day Extender Benefit	<ul style="list-style-type: none"> ⦿ Introducing unlimited pharmacy clinic consultations in the Wellness network, as well as video call consultations with a network GP. ⦿ Members will also have cover for consultations with a network GP when referred. ⦿ Consultations are unlimited for Executive, Comprehensive and Priority Plans, while Saver plans have a limited cover for up to 6 consultations.
Change to KeyCare Plus Casualty Benefit	<ul style="list-style-type: none"> ⦿ Elective casualty visits will be limited to 1 per person per year. ⦿ Emergency casualty visits or casualty visits that results in an admission will not be limited.
Limits, co-payments, deductibles and thresholds	<ul style="list-style-type: none"> ⦿ All benefit limits will be increased by 9.5%, with the exception of the following: oncology threshold limit, the international travel benefit limit, the overseas treatment benefit limit, specialised medicine and technology benefit limit, hip knee and spinal prostheses limit, external medical items limit, cochlear and auditory brain implant limit and KeyCare mobility limit. ⦿ All co-payments and deductibles will increase by 9.5%, except where a colonoscopy and gastroscopy are performed simultaneously, attracting an increased co-payment. ⦿ Thresholds will increase in line with the relevant plan increase.
Discovery Coaches	<ul style="list-style-type: none"> ⦿ When DHMS members experience a life-changing event, they have immediate access to: <ul style="list-style-type: none"> - Comprehensive benefits that fund their access to healthcare - Managed care programmes - Digital tools

Vitality enhancements

Discovery Miles	<p>Discovery Miles is Discovery's one rewards currency that members can earn for getting healthy, driving well and spending responsibly.</p> <p>How to earn Discovery Miles:</p> <ul style="list-style-type: none"> ⦿ By using a Discovery Bank Credit card. ⦿ Making healthier choices through HealthyFood, HealthyCare and HealthyGear. ⦿ Living well - Earn Discovery Miles and monetise healthy behaviour by engaging in Vitality Active Rewards every day. <ul style="list-style-type: none"> - Achieving weekly active rewards goals - Personalised goals - Vitality Active rewards for kids ⦿ Making good driving choices by good driving behaviour. <p>How to spend Discovery Miles:</p> <ul style="list-style-type: none"> ⦿ Spend your Discovery Miles on a range of rewards from coffees, smoothies and snacks, movies, shopping rewards at takealot.com and much more. ⦿ Shop online. ⦿ Shop instore. <ul style="list-style-type: none"> - Spend Discovery Miles to make real-time purchases instore at select partner stores through the Discovery app ⦿ Spend on travel - use your Discovery Miles to pay for: <ul style="list-style-type: none"> - Local and international flights - Local accommodation - Travel bookings ⦿ Exchange Discovery Miles. ⦿ Convert Discovery Miles to cash – straight into a Discovery Bank account.
-----------------	-----------------------------------------------------------------------------------------------------------------------------------------------------------------------------------------------------------------------------------------------------------------------------------------------------------------------------------------------------------------------------------------------------------------------------------------------------------------------------------------------------------------------------------------------------------------------------------------------------------------------------------------------------------------------------------------------------------------------------------------------------------------------------------------------------------------------------------------------------------------------------------------------------------------------------------------------------------------------------------------------------------------------------------------------------------------------------------------------------------------------------------------------------------------------------------------------------------------------------------------------------------------------------------------------------------------------------------------------------------------------------------------------------------------------------------------------------------------------------------------------------------------------------------------------------------

Discovery Active Rewards	<p>Vitality members can earn instant Discovery Miles for getting active, driving well and spending responsibly. Members can also play the gameboard for even more Discovery Miles.</p> <ul style="list-style-type: none"> ⦿ Rewards Currency. <ul style="list-style-type: none"> - Members now earn Discovery Miles when they achieve their Vitality Active Rewards goals. Members earn a play on the gameboard for every goal they achieve ⦿ Earn a bonus play for achieving all 3 Vitality Active Rewards goals. <ul style="list-style-type: none"> - Weekly exercise - Drive - Money goals ⦿ Complete personalised goals to earn thousands of Discovery Miles - earn over 10000 miles a year for achieving personalised health goals. ⦿ Spend Discovery Miles at Active Rewards partners - members can spend Discovery Miles immediately through the Active Rewards partners or save it for up to five years for even higher value rewards.
Rewards partners and enhancements	<ul style="list-style-type: none"> ⦿ Vitality Active Rewards will become more rewarding in 2020. Vitality members can now spend Discovery Miles at a wide range of new partners across various product categories. <ul style="list-style-type: none"> - Netflix / BoxOffice - Steam - Cotton On - Takealot.com and Nandino's Kids - Makro and Typo ⦿ All Vitality members can spend their Discovery Miles on Vitality Active Rewards. Qualifying Discovery Bank clients can also spend their Discovery Miles at online and instore partners or convert their Discovery Miles to cash.
Vitality Active Rewards for Kids and Teens	<ul style="list-style-type: none"> ⦿ Parents can now access Vitality Active rewards for their kids. ⦿ Kids aged 2 – 13 now have access to Vitality Active Rewards through their parents' phone – helping families nurture and reward healthy habits in children from a young age. <ul style="list-style-type: none"> - Tools to incentivise healthy habits - Earn Discovery Miles - Kids get exciting rewards ⦿ The main member can activate and access their child's profile based on Discovery Health policy information and can give their spouse control of their child's Vitality Active Rewards profile. ⦿ Vitality Active Rewards for Kids will go live in Q1 of 2020.
Update to Vitality Active Rewards Gym Booster	<ul style="list-style-type: none"> ⦿ From 01 October 2019, new gym booster activations will require Vitality members to have a qualifying Discovery Bank Account. Vitality members that have previously activated the gym booster benefit will continue to get up to 100% off their gym membership, with the boosted portion paid in Discovery Miles early next year.
2020 Discovery Integrator	<ul style="list-style-type: none"> ⦿ The Integrator uses the shared value assets across the group to monetise better health for members. The value is equivalent to an effective reduction of 1.0% of the average medical scheme contribution in 2020.
Aligning Vitality Status to health outcomes	<ul style="list-style-type: none"> ⦿ Thresholds will be adjusted to better reflect members' health status and reward continued health engagement. <ul style="list-style-type: none"> - Lower points thresholds to reward engagement ⦿ Diamond Vitality status redefined.
Extending Vitality's product offering in 2020	<ul style="list-style-type: none"> ⦿ Vitality has enhanced its product offering for 2020 with the introduction of the Vitality Health Tracker, available to all Discovery members at no cost. Vitality Active product helps even more members get healthy and rewarded through the following product levels:

	<ul style="list-style-type: none"> - Vitality Health Tracker will be replacing Vitality Move and is available to all Discovery members at no cost - Vitality Active reduced cost - Vitality
Mental wellbeing - personalised health goal in 2020.	<ul style="list-style-type: none"> ⌚ The mental wellbeing programme will encourage regular mental wellbeing screenings, recommend risk-based interventions and will reward members for reaching their goals. In order for member to reach these goals, they will need to: <ul style="list-style-type: none"> - Do online assessments - Based on the outcome of the assessments, members will receive tailored recommendations and interventions ⌚ Goals will be personalised based on the individual risk profile.

Discovery Health contribution table 2020

Series	Plan	Principal Member	Adult Dependant	Child Dependant	Average increase
Executive	Executive	R7 257	R7 257	R1 385	10.9%
Comprehensive	Classic Comprehensive	R5 954	R5 633	R1 188	10.9%
	Classic Delta Comprehensive	R5 362	R5 077	R1 069	10.9%
	Classic Smart Comprehensive	R4 327	R3 994	R1 378	NEW
	Essential Comprehensive	R5 003	R4 731	R1 008	10.9%
	Essential Delta Comprehensive	R4 507	R4 257	R 904	10.9%
Priority	Classic Priority	R3 814	R3 008	R1 526	8.9%
	Essential Priority	R3 278	R2 577	R1 310	8.9%
Saver	Classic Saver	R3 290	R2 596	R1 318	8.9%
	Classic Delta Saver	R2 628	R2 076	R1 056	8.9%
	Essential Saver	R2 615	R1 961	R1 048	8.9%
	Essential Delta Saver	R2 085	R1 575	R 837	8.9%
	Coastal Saver	R2 608	R1 962	R1 053	9.9%
Smart	Classic Smart Plan	R1 954	R1 542	R 781	8.9%
	Essential Smart Plan	R1 400	R1 400	R1 400	8.9%
Core	Classic Core	R2 449	R1931	R 980	8.9%
	Classic Delta Core	R1 960	R1 545	R 784	8.9%
	Essential Core	R2 104	R1 577	R 846	8.9%
	Essential Delta Core	R1 681	R1 265	R 675	8.9%
	Coastal Core	R1 946	R1 462	R 774	9.9%
KeyCare	KeyCare Plus (R13 801+)	R2 450	R2 450	R 656	8.9%
	KeyCare Plus (R8 551 to R13 800)	R1 659	R1 659	R 468	8.9%
	KeyCare Plus (R0 to R8 550)	R1 207	R1 207	R 439	10.9%
	KeyCare Core (R13 801+)	R1 809	R1 809	R 410	8.9%
	KeyCare Core (R8 551 to R13 800)	R1 183	R1 183	R 292	8.9%
	KeyCare Core (R0 to R8 050)	R 949	R 949	R 245	10.9%
	KeyCare Start (R13 801+)	R2 394	R2 394	R 650	8.9%
	KeyCare Start (R9 151 to R13 800)	R1 538	R1 538	R 601	8.9%
KeyCare Start (R0 to R9 150)	R 914	R 914	R 550	10.9%	

Discovery Health Medical Savings Account (included in the above monthly contribution, where applicable)

Series	Plan	Principal Member		Adult Dependant		Child Dependant	
		Annual	Monthly	Annual	Monthly	Annual	Monthly
Executive	Executive	R21 768	R1 814	R21 768	R1 814	R 4 152	R 346
Comprehensive	Classic	R17 856	R1 488	R16 896	R1 408	R 3 564	R 297
	Classic Delta	R16 080	R1 340	R15 228	R1 269	R 3 204	R 267
	Essential	R 9 000	R 750	R 8 508	R 709	R 1 812	R 151
	Essential Delta	R 8 112	R 676	R 7 656	R 638	R 1 620	R 135
Priority	Classic	R11 436	R 953	R 9 024	R 752	R 4 572	R 381
	Essential	R 5 892	R 491	R 4 632	R 386	R 2 352	R 196
Saver	Classic	R 9 864	R 822	R 7 788	R 649	R 3 948	R 329
	Classic Delta	R 7 884	R 657	R 6 228	R 519	R 3 168	R 264
	Essential	R 4 704	R 392	R 3 528	R 294	R 1 884	R 157
	Essential Delta	R 3 744	R 312	R 2 832	R 236	R 1 500	R 125
	Coastal	R 6 252	R 521	R 4 704	R 392	R 2 520	R 210

Contributions and savings are calculated and charged up to a maximum of 3 children; dependants 21 years + are considered adult dependants

Discovery Health annual threshold levels

Executive & Comprehensive plans

	Executive Plan	Comprehensive Plan	Classic Smart Comprehensive
Principal member	R25 300	R20 850	R23 900
Per adult	R25 300	R20 850	R23 900
Per child*	R 4 800	R 4 000	R 800

*A maximum of three children are counted when calculating the Annual Threshold

Priority plans

	Annual Threshold	Above Threshold Limit
Principal member	R16 900	R14 300
Per adult	R12 700	R10 200
Per child*	R 5 600	R 5 000

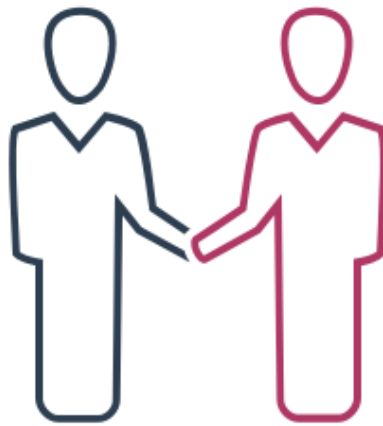
*A maximum of three children are counted when calculating the Annual Threshold and Above Threshold Pool Limit

Discovery Health annual threshold levels

	Single Member	Member with one dependant	Member with two or more dependants
Vitality	R280	R340	R395

	Single Member	Additional adult dependants
Vitality Active	R 89	R 79

Year-end member sessions



Apart from the communication which all members will receive from Discovery regarding the changes to their specific options, Simeka Health will make available our allocated healthcare consultants for year-end member sessions as agreed.

Further, Simeka Health Client care (0860 122 340) is available to assist your employees with detailed information about the 2020 benefits and to select a suitable option.

Yours in Good health
Simeka Health

Disclaimer:

The purpose of this report is to provide you with all information at our disposal and, on the basis of the information, to assist you in making an informed decision regarding the healthcare needs of your organization or company. In compiling this report, we have relied upon the accuracy and completeness of information made available to us by various suppliers other third parties and, except where expressly stated in this report, we have not independently verified the accuracy of the facts or the bases of the information supplied to us.

All information, data, attachments and recommendations contained in this report is confidential and is intended for the exclusive use of Simeka Healthcare Consultants clients.

Any unauthorised use, dissemination, alteration or disclosure to any other third party without the prior written permission of Simeka Health (Pty) Ltd is strictly prohibited. Any portion of this report, if reproduced or transmitted with our express consent, must include a reference to the full report and to this clause.

While all reasonable care has been taken by Simeka in compiling this report, we have relied upon the accuracy and completeness of the information made available to us and subsequently cannot accept any liability for any errors or omissions that may arise as a result of the reliance on such information.

Any comparison in this report is a summary of the benefits only and does not replace the rules of the medical scheme / occupational health / insurance products.

Simeka will not be held liable in any manner whatsoever for any loss or any direct, special or consequential damages arising from the use of this report, including, without limitation, from any loss of profit or business interruption. Please note that all information contained in this report is relevant only for the date(s) given and the period(s) stated therein.