

more support when you need it

- The **Fedhealth Family Room**, our online member portal
- The **Fedhealth Baby Programme**, support and advice for all pregnant beneficiaries
- **Paed-IQ**, free online parenting hub
- **24-Hour Fedhealth Nurse Line**
- **Emergency transport/response** through Europ Assistance
- **Emotional Wellbeing Programme** gives members free telephonic support and advice through those stressful curveballs life throws at us, and can put them in touch with a psychologist at a reduced rate if required.
- **MediTaxi**, transport service for members who need follow-up medical visits following a hospital authorisation.
- **SOS Call Me**, USSD call-back service so members can access Emergency Medical Services (EMS), Fedhealth Nurse Line or MediTaxi.
- **Comprehensive managed care programmes:**
 - Aid for AIDS (AfA) for those living with HIV/AIDS
 - Oncology Disease Management supports cancer sufferers with comprehensive care including cover for chemotherapy, radiotherapy, approved medication, related consultations, pathology and general radiology.
 - Mental Health Programme provides qualifying members who have mental health or substance abuse issues with access to the best quality primary mental healthcare.
 - Conservative Back and Neck Rehabilitation Programme helps qualifying members address their back and neck issues to avoid spinal surgery. Over six weeks, members benefit from a multidisciplinary approach including a GP, physio and biokineticist to assess and treat their condition.
 - Smoking Cessation Programme – All members on all options can sign up for the GoSmoke-Free service at 200 pharmacies countrywide to help them kick the habit for good. This programme will be paid from Risk.
 - Weight Management Programme is a 12-week programme designed for qualifying Fedhealth members with a high BMI and waist circumference. Led by a biokineticist, members have access to a dietician and behavioural psychologist with the goal to lose the excess weight and lead healthier, more rewarding lives.

topmed
executive

VS

maxima **EXEC**

Topmed's **Executive** option provides comprehensive medical aid cover through an in-hospital benefit, a Medical Savings Account for day-to-day medical expenses, as well as a Threshold Benefit.

Fedhealth's maxima **EXEC** option is also a comprehensive option, providing you with generous cover through a core benefit bundle (similar to risk), a Medical Savings Account, and a Threshold Benefit.

In addition, on this option, you can **save 11% on your monthly contribution** by using our **GRID hospital network** for planned procedures.

Contact Number:
0860 002 153

Email Address:
member@fedhealth.co.za

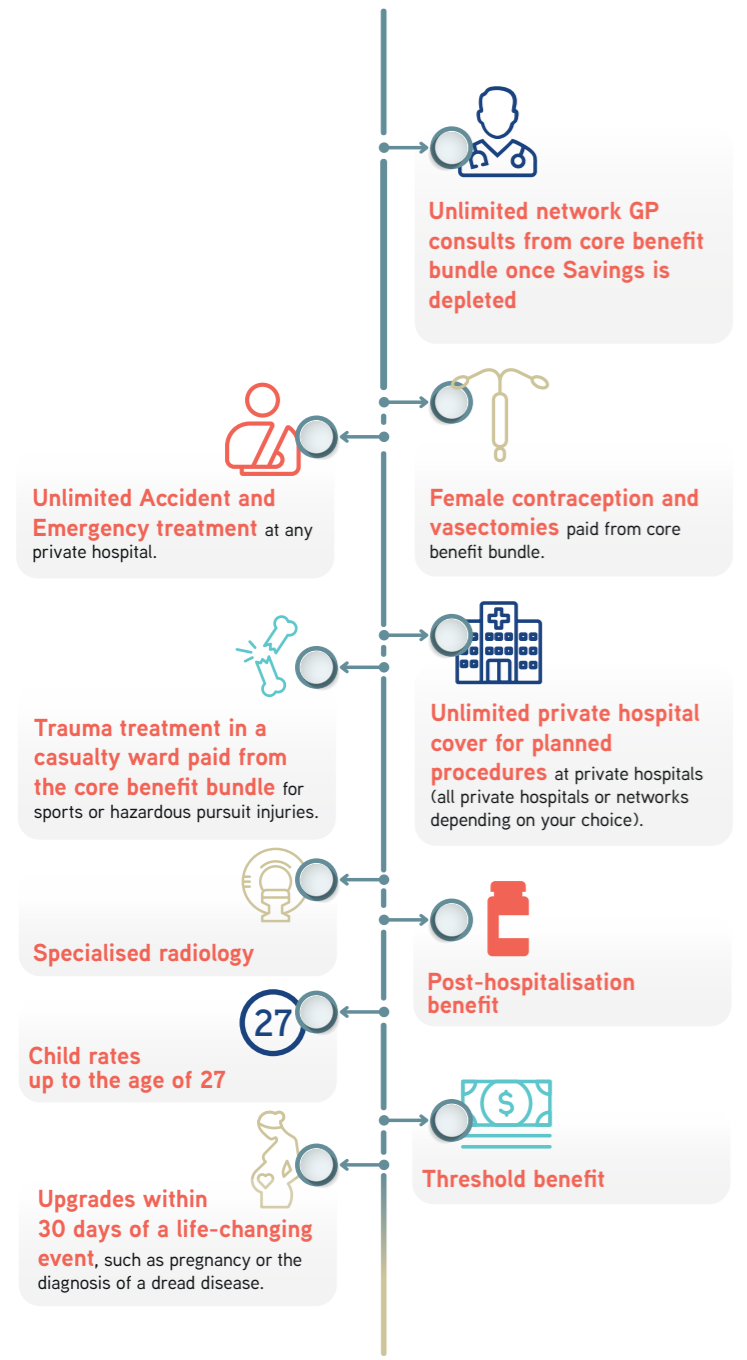
www.fedhealth.co.za



why maxima EXEC

maxima EXEC offers these amazing benefits to give you more:

For mature families looking for cover that leaves nothing to chance.



executive

- R 510 180 p/b per 12-month cycle.
- Biologicals: sub-limit of R296 628 with 20% co-pay
- Limited to PMBs
OOH: R6 624 p/f/p/a
- 100% of TopMed tariff: Unlimited. R2 750 co-payment
- Subject to MSA and ATB, sublimits apply
- Unlimited - DSP and Formulary applies (non-form or non-DSP: 30% co-pay)
- 100% of Tariff - R10 680 p/b R21732 p/f - 30 conditions
- Subject to MSA and ATB - Optical limit: Single- R2 628 Family- R7 692 (PPN providers)

Risk	P	A	C
topmed executive	R4 020	R3 208	R1 224
+			
Day-to-Day (monthly contribution)	P	A	C
topmed executive	R1 339	R1 069	R405
=			
Total monthly Contribution	P	A	C
topmed executive	R5 359	R4 277	R1 629

benefits

- HOSPITAL BENEFIT**
 - Oncology
 - Specialised Medicine
 - Psychiatric Hospitalisation
- RADIOLOGY/PATHOLOGY/PROSTHESIS**
 - MRI, CT & PET Scans
 - External Appliances/Prosthesis
- CHRONIC BENEFIT**
 - CDL chronic conditions
 - Additional chronic conditions
- DAY-TO-DAY BENEFIT**
 - OPTICAL BENEFIT Examination

maxima EXEC

- R555 900 p/f
- R173 400 p/f
- R32 000** per family
- Unlimited** at Scheme Rate. R2 200 member co-payment
- Limited to **R17 300** per family
- Unlimited** - Members can visit **any pharmacy of choice**, but to ensure no out-of-pocket expense PREFERRED PROVIDERS are Dis-Chem, Medi-Rite & Pharmacy Direct & Comprehensive Formulary
- 26 conditions - Limited to: Single R7 100, Family R13 100
- Savings, SPG and ATB. Subject to Optical limit: R3 340 p/b, R10 190 p/f

Fedhealth's risk portion is called the CORE BENEFIT BUNDLE and is already jam packed with benefits you're unlikely to find anywhere else, like an unlimited network GP consultation benefit once savings are depleted and health screenings!

Save even more by choosing our **25% GRID savings!**

Risk/Core Benefit Bundle	P	A	C
maxima EXEC	R4 584	R3 973	R1 431
maxima EXEC ^{GRID}	R4 080	R3 536	R1 273
+			
Day-to-Day (monthly contribution)	P	A	C
maxima EXEC	R752	R652	R235
maxima EXEC ^{GRID}	R670	R580	R209
=			
Total monthly Contribution	P	A	C
maxima EXEC	R5 336	R4 625	R1 666
maxima EXEC ^{GRID}	R4 750	R4 116	R1 482
Annual Threshold	P	A	C
maxima EXEC	R13 651	R10 482	R 3 511
maxima EXEC ^{GRID}	R13 651	R10 482	R 3 511