

#RSABUDGET2021

www.treasury.gov.za

f RSA Budget

t #RSABudget2021

Kgatiso e ke matlhakanelwa a lefapha la matlotlo le lefapha la lekgetho la Afrika Borwa

DITLHAGISO TSA

national treasury
Department:
National Treasury
REPUBLIC OF SOUTH AFRICA

Tel: (012) 315 5757

www.treasury.gov.za

TEKANYETSOKABO KE ENG

Tihakole o mongwe le o mongwe Letona la Matlotlo le rebola Tekanyetsokabo ya setšhaba mo a begang lenaneo la puso la go dirisa madi, lekgetho le kadimo ya madi mo dingwangeng tse tharo tse di latelang. Tekanyetsokabo e tshalosa mokgwa o madi a puso a tšileng go arogangwa ka teng mo mafapheng a bosetšhaba, diporofinsi le dipusoselegae.

TEKANYETSO KABO E BAAKANGWA JANG?

1. Ditaalo di romelwa go mafapha mabapi le tshedimsetso ya tekanyetsokabo
2. Mafapha a beela pele mananeo a a botlhokwa, maano a a supang tiriso ya madi le maikemisetso a go tšweletsa ditirelo tsa setšhaba
3. Megopolo ya tekanyetsokabo e romelwa kwa lefapheng la matlotlo gore e sekasekiwe ka kelothoko

4. Komiti ya batsamaisa-bagolwane e atthaatla dikabo tsa tekanyetsokabo ka keletlhoko
5. Komiti e e dira dipuelelo kwa komiting ya Matona a tekanyetsokabo
6. Lekwalo la tekanyetsokabo ya selekano se se fa gare ga nwaga (MTBPS) le tshwaela tekanyetsokabo e e tla solofelwang

7. Lwa bofelo tshwetso ya dikabo e tseewa kwa kobotlong
8. Makwalo a tekanyetsokabo a baakangwa
9. Tekanyetsokabo ya naga e ya itsisiwe
10. Palamente e akanyetsa le go amogela tekanyetsokabo
11. Morago ga seo tekanyetsokabo e romelelwa kwa Mopresidente go e baya monwana gore e nne mo molaong

GO SIMOLOLA GAPE GA ENJENE YA KGOLO

Tekanyetsokabo ya ngwaga wa 2021 e netefatsa gore Afrika Borwa e kgona go laola dikgwetlo tsa nakwana tsa ikonomi, tse di akarsang seabe sa COVID-19 fa e ntse e sekaseka dikgwetlo tse di sa khutleng tsa ditheo tse di lebileng naga.

Mo nakong e khutswane, puso e itlamile go thankgolola meento ya COVID-19 jaaka sediriswa sa botlhe, go ya ka tlhokego le megato ya tsamaiso ya Lefapha la Boitekanelo. Mo ngwageng wa 2020/21, puso e tsibogetse leroborobo bo ka go neelana ka madi a kana ka dibilione di le 20 tsa diranta mo lephateng la boitekanelo go oketsa dithata tsa go thibela tshwaetso, ditlathlho le diteko. Kabelo ya dibilione di le 9 tsa diranta di abetswe go ka tlamela meento mo dingwageng tse pedi (2) tse di tlang, mme godimo ga

moo ga abelwa dibilione di le 7 tsa diranta e leng a polokelo ya maano a tshoganyetso, go ka tlamela kgatelelo ya ketleletso ya matlole. Katlego ya letsholo la meento e tšile go boloka matshelo a le mantsi ebile e kgonagatse tokafatso ya ikonmi e e bonalang.

Le fa leano la kgolo ya GDP la mmatota le akanyeditse gore le fokotsege ka diperesente di le 7.2 mo ngwageng wa 2020, go na le tsholofelo ya gore le tla fitlhelela kgolo ya dipresente di le 3.3 mo ngwageng wa 2021, pele ga kgolo e fokotsega go diperesente di le 1.6 mo ngwageng wa 2023. Maemo a matlole, a a neng a setse a ntse a le bokoa pele ga mathata a jaanong, a koafetse mo go gagamatsang, mo e bileng go tlhokegang dikgato tse di masisi go tla maemo a kwa godimo a sa kgongweng go laolwa a sekoloto.

Togamaano, e e lekalekaneng gape e le matsetseseleko, ya puso e tshegetsatsa boitekanelo ba setšhaba le kgolo, ebile e diretswe go tlhomamisa matlole a setšhaba. Tiriso ya matlotlo go tsa mafaratlhatlha ke yona e golang ka bonako go fetisisa tiriso ya madi e e senang merokotso. Tlhaelo ya tekanyetsokabo e gagamatsa leano la kgolo ya GDP go tswa go diperesente di le 7.5 mo ngwageng wa 2020/21, go ya go diperesente di le 0.8 mo ngwageng wa 2023/24; mme sekoloto-segolo sa puso se tsepame go diperesente di le 88.9 tsa leano la kgolo ya GDP mo ngwageng wa 2025/26. Go ntse go le jalo, tekanyetsokabo ya ngwaga wa 2021 e fokotsa bokete jwa lekgetho, ka go kgaotsa dikitsiso tsa maloba tsa dikoketso lekgetho ka dibilione di le 40 tsa diranta.

Dikgwetlo tsa matlole a Afrika Borwa

ke go lekanya tshegetso ya potlako ya ikonomi mo magareng ga leroborobo ka maiteko a go tšweletsa go tswalela seemo se se dulang se reketla tota sa matlole a a tshaelang a tekanyetsokabo. Thulaganyo ya matlole a puso, e leka go lekalentsha dikakanyo tse pedi tse. Go baakanya matlole a go neelana ka meento go tšile go nna le seabe se se botlhokwa thata go laola leroborobo, le go tshegetsatsa tiro e kgolo ya ikonomi.

Madi a katlaatlalo-loago a tšalelo, e e tlhomilweng go neelana ka tshegetso ya nakwana mo malapeng a letseno le le kwa tlase mo ngwageng wa 2020, e tšile go tšweletswa go fitlha ka Moranang 2021. Ka nako yona eo, thulaganyo ya matlole a puso e tshwanetse go tlhoma mogopolo mo go tlhomamiseng madi a setšhaba mo lobakeng lo lo leelenyana, go netefatsa tlhomamo ya ikonomi le kgolo.



MOLAETSA WA LETONA

Esitse e le lobaka lo e ka nnang lwa Engwaga fa esale go lemogiwa kgetsi ya ntlha ba COVID-19 mo Afrika Borwa. Leroborobo le le ne la oketsa go se tihomamisega lefatshe ka bophara.

Batho ba ba ntsi ba ne ba latlhegelwa ke matshelo mme ba bangwe ba ne ba latlhegelwa ke ditiro. Boemo jo bo sa tlwaelegang gotlhelele bone ba dira gore re lebele tsela eo re tlaetseng go dirang dilo ka teng mme ra amogela diphetogo gore re gatele pele. Puso ya lebiwa ke tiro e kgolo ya go thibela go animiswa ga mogare o. Ya se tihole ya nna jaaka go tlwaelegile. Puso ene ya kganelela batho batho go tswa mo matlong, le tihasele ya bobedi mogare ya tliša mathata a le mantsi.

Maitlhomomagolo a tekanyetsokabo a ne a tswanela ke go fetoga go nolofatsa ikonomi go khuetso e e sa siamang e e tlišitsweng ke mogare. Le fa go sa tihomama, mogare ga wa ka wa re kgoreletsa go fithelela maikaelelo a rona a go bona kgolo ya ikonomi le ditirelo. Ditiro tsa ikonomi di setse di simolotse go fetoga, seo se tokafatsa isagwe ya rona ya kgolo.

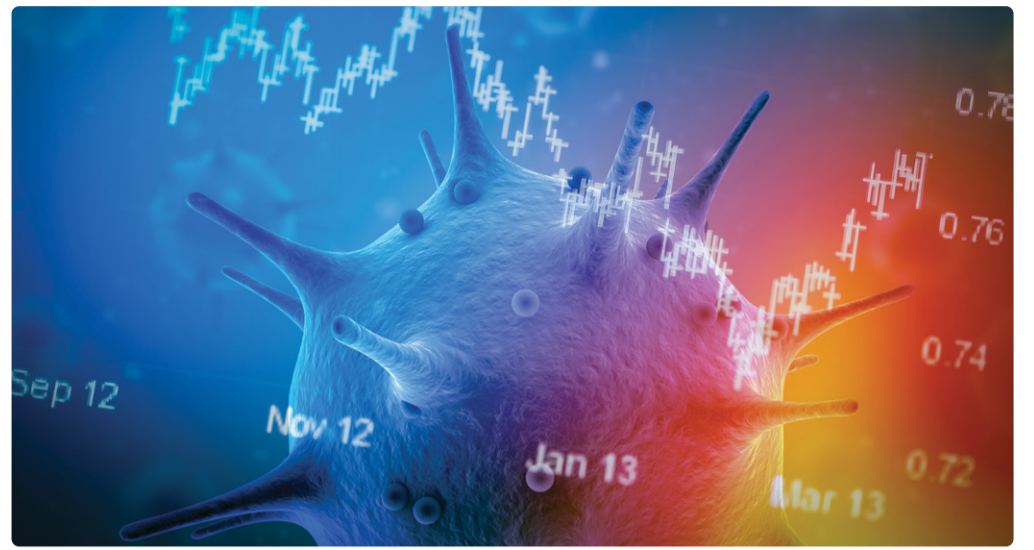
Mo tekanyetsokabo ya ngwaga wa 2021, togamaano ya rona ya matlole ke go tlamela ikonomi ka tshegetso e e tswelelang le dithuso tsa batho botlhe tsa kalafi mo lobakeng lo lo khutshwane, kwantle ga go oketsa kgatelelo ya tiriso ya madi mo lobakeng lo lo leele. Re ikaelela go tlhabolola tiriso ya madi ka go fokotsa kgolo ya dituelo tsa badiri, mme re sireletsa dipeeletso tsa matlole; re gagamatse ditlhaelo le go tihomamisisa kabalano ya sekoloto mo leanong la GDP. Re tswela go dira ka natla go laola tshenyo ya tiriso ya madi le go tlhabolola matshelo a batho ba rona. Moento o o re neela tsholofelo ya gore mogare o o kotsi oo o ka fenngwa. Go ntse jalo, ga re ya tshwanela go repisa letsogo.

Ke rotloetsa maAfrika Borwa go tswela pele go gagamalela go latela ditaelo tsa COVID-19, tlhapa diatla ka metlha gape of apare sebipo sa sefatlhego go fokotsa go anamisa mogare.

GO DIRENG GA PUSO GO FOKOTSA SEABE SA COVID-19 MO IKONOMING

Pele ga leroborobo la COVID-19, kopano ya letseno le le kwa tlase, maemo a kwa godimo a sekoloto le kgolo ya botlhokatiro, ene e le sesupo sa gore ikonomi ya Afrika Borwa e setse e le mo seemong se se reketlang tota.

Makoa a ditheo, go se tihomamisega ga sepolotiki le dithulaganyo, go koafaditse maemo a a kwa tlase a kgolo ya ikonomi le go feta, a naga e iphitlhelang e le mo go one. Leroborobo le tihomamisitse maemo a go tlhoka tekano a a leng teng le go tlhabela ga ditirelo tsa puso tse di amang bontsi jwa palo ya baagi ba naga. Le fa go le gontsi go ikaegile



mo goreng meento ya COVID-19 e tla ntshiwa ka potlako le tsela e e botoka mo lobakeng le le khutswanyana, kgang e e boteng ke diphetogo tsa ditheo go dira gore re kgone go aga maemo a a tshwanetseng go dira gore naga e gole.

Mo nakong e khutswanyane, puso e dira ka thata go fokotsa seabe sa leroborobo le le tsamaisanang le kganelo ya batho ya go tswa mo matlong. Se se akaretsa go tshegetsa dikgwebo ka Unemployment Insurance Fund (UIF), dithulaganyo tsa lekgetho

le sekema sa go tihomamisisa kadimo ya madi, ebile gape le go tshegetsa malapa a letseno le le kwa tlase. Mo lobakeng lo loleele, puso e tšile go tlhoma ditheo tsa diphetogo ka Economic Reconstruction and Recovery Plan. Leano le le akaretsa lenaneo le le tseneletseng la karabo ya boitekanelo go boloka matshelo le go emisa tshwaetso ya leroborobo; go tsaya dikgato tsa go tsosolosa ikonomi e ntse e laola dikotsi tsa boitekanelo; mme gape e tshegetse diphetogo tse di agang ikonomi e e nonofileng ebile e akaretsa botlhe.



PUSO E IKALETSE GO TLHABOLOLA MAFARATLHATLHA

Go godisa ikonomi le go fokotsa botlhoka-tiro le lehuma ka halofo ka ngwaga wa 2030, go tlhokega peeletso ya matlole a a kwa godimo a diperesente di le 30 tsa leano la kgolo la GDP go tswa mo maphateng a puso le a poraefete.

Go sa kgathalesega matsapa a leroborobo la COVID-19, puso e tswela go baya kwa setlhoeng ntlha ya tiriso ya madi a mafaratlhatlha go rotloetsa kgolo ya ikonomi, le go

fokotsa botlhokatiro le lehuma. Mo dingwageng tse tharo tse di latelang, puso e tšile go dirisa dibilione tse di kana ka 791.2 tsa diranta mo go tsa mafaratlhatlha.

Puso e tlhola tikologo e e kgontshang tisanommogo e e matlaafetseng le lephata la poraefete go dirisa maemo a bona a kitso le bokgoni, le go godisa didiriswa tse di leng teng go duelela mafaratlhatlha.

TIRISO SENTLE YA DIPHETOGO TSA TEKANYETSO-KABO



Tshenyo le tiriso e e seng sentle ya madi e fokotsa boleng jwa mananeo a puso, segolo-thata mo bokaong jwa metswedi e e lekanyeditsweng ya naga.

Go tlhabolola tiriso e ntle ya madi, puso e simolotse metsheletsele ya ditshekatsheko tsa tiriso ya madi le go leba melaotheo ya tekanyetso ya go tswa nnoto. Lefapha la Dikgwebo tsa Setšhaba le Lefapha la Matlotlo a tšile go nna mafapha a ntlha a go dira diteko tsa mokgwatiro o o mosha.

PUSO E TSWELETSA KETELOPELE YA MADI A KATLAATLELO-LOAGO GO FOKOTSA LEHUMA LE GO TLHOKA TEKANO



Tekanyetsokabo ya ditshenyegelo tse di kopantsweng tsa puso mo ngwageng tse tharo tse di akanyeditswe go ditirilione di le 6.16 tsa diranta, e leng phokotsego ya dibilione di le 20 tsa diranta ya tekanyetsokabo e e kopantsweng, ya ditirilione di le 6.14 tsa diranta, ya ngwaga o o fetileng.

Se ke ka ntlha ya megopolo ya go fokotsa dituelo tsa babereki ka dibilione di le 303 tsa diranta go tloga mo ngwageng wa 2020/21 go

fitlha go 2023/24. Le fa gontse jaalo, tekanyetsokabo e e kopantsweng e tswelela go eteletsapele ntlha ya go fitlhelela maikaelelo a go fokotsa lehuma le go tlhoka tekatekano, ka go abela diperesente di le 56.6 go tswelletsa ditiro tsa thuto le motheo, boitekanelo le katlaatlelo-loago mo dingwageng di le tharo tsa tekanyetsokabo. Tiriso ya madi mo tlhabolong ya ikonomi, tlhabololo ya baagi le kagiso le tshireletso e santse e le botlhokwa go fetola loago lwa ikonomi, le tshireletsego le pabalesego.



TSHEDIMOSO KA VULEKAMALI – GO FETELA PELE KA GO NNA PEPENENENG

Vulekamali ke website ya bomampudi e e tlamelanang ka tshedimosetso e e dirisegang bonolo ya matlotlo a puso, e e thakgotsweng ka 2018.

IMALI YETHU (e e rulagantsweng ke mekgatlo ya setšhaba), e e nang le botsalano jo bo tswelletseng le Lefapha la Matlotlo, e tla tswelela ka go neela setšhaba maatla ka tshedimosetso e ntlha mo karolong ya bobedi go

simolola ka ngwaga wa 2021. Go tla go fitlha jaanong, tshedimosetso e e leng teng mo Vulekamali e dirisiwa ke ditheo tsa thuto, babegadikgang le mekgatlo ya setšhaba. Re solofela go atisa botsalano. Vulekamali e tshegetsabao ba batlang go tlhologanya kgotsa go tsaya karolo mo tsamaisong ya tekanyetsokabo. Go bona divideo le dikaedi tsa thuto tsa dipuo tse di farologangeng, etela www.vulekamali.gov.za/learning-resources

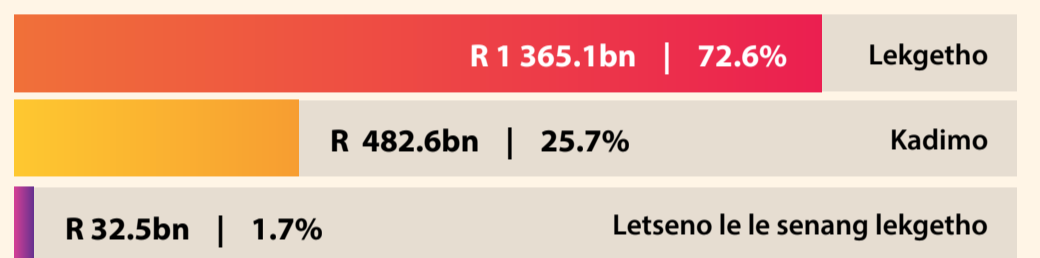
MADI A KATLAATLELO-LOAGO

Palogotlhe ya batho ba ba amogelang madi a katlaatlelo-loago e lebeletswe go oketsega ka batho ba kana ka 300 000 mo nakong e e tlang. Boleng jwa madi a mantsi a katlaatlelo-loago, a tile go oketsega ka palo e e kwa tlase ga kelo ya infoleišene .

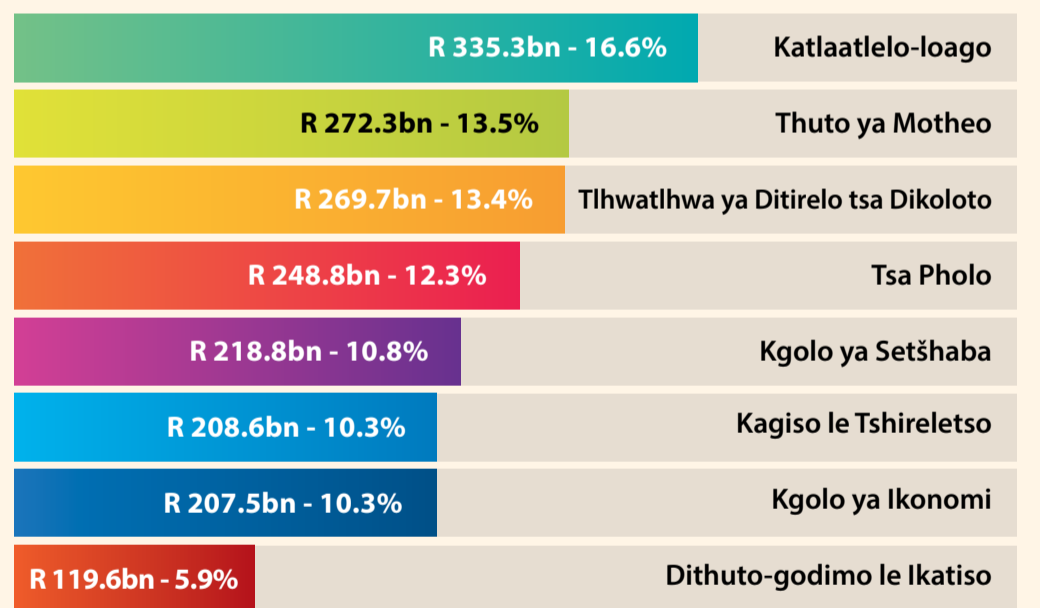
SOCIAL GRANTS	2020/21	2021/22
Phenshene ya batsofe	R1 860	R1 890
Phenshene ya batsofe ba kwa godimo ga 75	R1 880	R1 910
Madi a go tlamela masole a maloba	R1 880	R1 910
Madi a go tlamela ba ba sa itekanelang	R1 860	R1 890
Madi a go tlamela bana ba ba senang batsadi	R1 040	R1 050
Madi a go thusa bao ba ikaegileng go puso	R1 860	R1 890
Madi a go tlamela bana	R445	R460

MADI A TSWA KAE EBILE A TLILE GO DIRISIWA JAANG KA 2021/22?

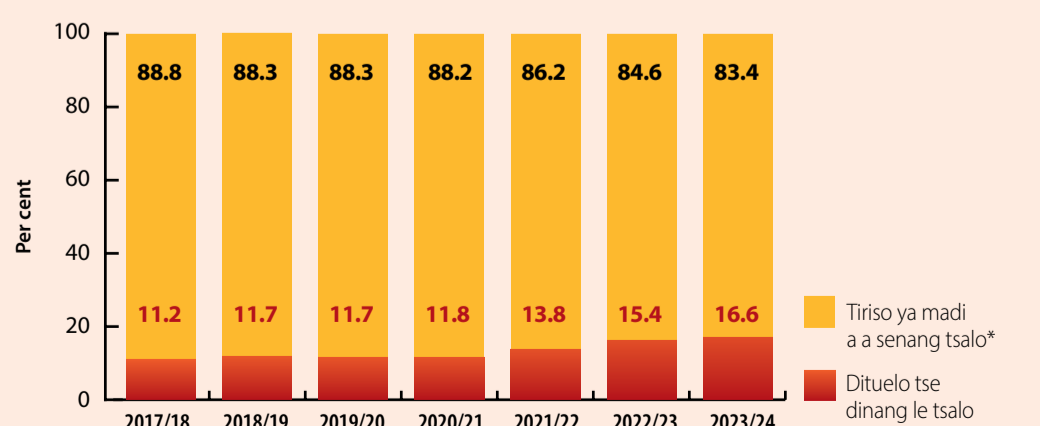
METSWEDI YA LETSENO YA PUSO KA 2021/22



TIRISO YA MADI A PUSO KA NGWAGA WA 2021/22



DITUELO TSA PUSO TSE DI SENANG TSALO LE TSE DI NANG LE TSALO JAAKA KAROLO YA MADI OTLHE A A DIRISITSWENG



* Madi a a dirisiwang a sena tsalo le madi otlhe a a dirisitsweng ke puso a sa akaretse tsalo ya madi a sekoloto

DITOGAMAANO TSA LEKGETHO TSA 2021



LEKGETHO LA BADIRI

DIPHETOGO TSA LEKGETHO LA BADIRI LE GO AMA JAANG?

Tekanyetsokabo ya ngwaga wa 2021 e neelana ka diphetogo tsa mephato ya matseno le go oketsa dipelo tsa lekgetho la letseno ka go nagana enfoleishene e e ka nnang ka diperesente di le 5. Madi ao motho a ka a amogelang pele a ka duela lekgetho, a baakantswe ka tsela e e latelang mo ngwageng wa lekgetho o o simololang ka 1 Mopitlwe 2021 go fitlha ka 28 Tlhakole 2022.

MEPHATO YA LEKGETHO	2020/21	2021/22
Kwa tlase ga dingwaga di le 65	R83 100	R87 300
Dingwaga di le 65 go fitlha go di le 74	R128 650	R135 150
Dingwaga di le 75 le go feta	R143 850	R151 100

Mephato e mešwa ya lekgetho la baduela lekgetho e jaana:

DIPOELO TSA LEKGETHO	2019/20	2020/21
Ga ntlha (kwa tlase ga dingwaga di le 65)	R14 958	R15 714
Secondary (age 65 le go feta)	R8 199	R8 613
Tertiary (age 75 le go feta)	R2 736	R2 871

LETSENO LA BOLEOFI

TLHATLHOSO YA LEKGETHO LA BOJWALA LE MOTSOKE

Lekgetho le le kgethegileng la dino tsa bojalwa le dikumo tsa motsoko le tla oketsega ka diperesente di le 8.

	DITLHATLHOSWA KA:
Bire	14c motema wa 340ml
Mofeine o o sa omelwang	26c lebotlolo la 750ml
Mofeine o o ometsweng	44c lebotlolo la 750ml
Mofeine o tsabakelang (Sparkling Wine)	86c lebotlolo la 750ml
Bojwala jwa maungo	14c moteme wa 340ml
Bojwala jwa digalagala	R5.50 lebotlolo la 750ml
Motsoko	R1.39 pakete ya 20
Motsoko o o sa phutelwang	R1.57 selekano sa 50g
Motsoko wa peipe	47c selekano sa 25g
Disikara	R7.71 selekano sa 23g

LEKGETHO LA LEOKWANE

DITLHATLOSO TSA LEKGETHO LA LEOKWANE LE LE AKARETSANG

Tlhatloso ya lekgetho la leokwane la kakaretso ke disente di le 15 litara fa letlote la dikotsi tsa tsela e le disente di le 11 go simolola ka 7 Mopitlwe 2021. Mme seo se tllile go tlhatlhosang:

- Madi a lekgetho la leokwane la kakaretso ka dranta di le 3.85 litara ya petorolo le go diranta di le 3.70 litara ya disele
- Madi a letlote la lekgetho la dikotsi tsa tsela ka diranta di le 2.18 litara ya petorolo le disele ka bobedi.

TEKANYETSO YA LEKGETHO

LEKGETHO: MOTHO KA BOENE LE DITERASETE

Tuelo ya lekgetho la motho ka boene ya lekgetho-la-ngwaga o o felang magareng ga 1 Mopitlwe 2021 le 28 Tlhakole 2022

Letseno la Baduela Lekgetho (R)	Tuelo ya Lekgetho (R)
0 go 216 200	18% ya letseno
216 201 go 337 800	38 916 + 26% ya letseno le le kwa godimo ga 216 200
337 801 go 467 500	70 532 + 31% ya letseno le le kwa godimo ga 337 800
467 501 go 613 600	110 739 + 36% ya letseno le le kwa godimo ga 467 500
613 601 go 782 200	163 335 + 39% ya letseno le le kwa godimo ga 613 600
782 201 go 1 656 600	229 089 + 41% ya letseno le le kwa godimo ga 782 200
1 656 601 le go feta	587 593 + 45% ya letseno le le kwa godimo ga 1 656 600
DiTerasete tse di sa kgethegang	Rate of tax 45%

LETSENO LA BADUELA LEKGETHO: DIKGWENO

Ngwaga magareng ga 1 Moranang 2021 le 31 Mopitlwe 2022

Mofuta wa Lekgetho	Tuelo ya Lekgetho (R)
Dikgweno	28% ya letseno le le duelang lekgetho

LETSENO LA LEKGETHO: DIKOMPONE TSE DIKGOLOANE TSA BATSHWARADIABE BA BA FITLHANG GO 10 KA PALO

Ngwaga magareng ga 1 Moranang 2021 le 31 Mopitlwe 2022

Letseno la Baduela Lekgetho (R)	Tuelo ya Lekgetho (R)
0 – 87 300	0% ya letseno
87 301 – 365 000	7% ya letseno le le kwa godimo ga 87 300
365 001 – 550 000	19 439 + 21% ya letseno le le kwa godimo ga 365 000
550 001 le go feta	58 289 + 28% ya letseno le le kwa godimo ga 550 000

LETSENO (KWA NTLE LE GO NTLHA DITSHENYEGELO) DIKGWENO-POTLANA TSA BATSHWARADIABE BA BA FITLHELANG GO 5 KA PALO

Ngwaga magareng ga 1 Mopitlwe 2021 le 28 Tlhakole 2022

Lekgetho la Letseno (R)	Tuelo ya Lekgetho (R)
0 – 335 000	0% ya letseno
335 001 – 500 000	1% ya letseno le le kwa godimo ga 335 000
500 001 – 750 000	1 650 + 2% ya letseno le le kwa godimo ga 500 000
750 001 le go feta	6 650 + 3% ya letseno le le kwa godimo ga 750 000